



F9

F10

F11



F12

F15



F13

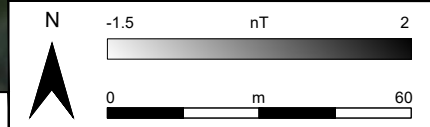
F14

Project Kingston Solar Farm, Nottinghamshire

Client Neo Environmental Ltd. on behalf of RES (Renewable Energy Systems Ltd.)

Figure Greyscale 6

Fig. 10 Scale 1:1500 @ A3 TAG 2021UK24



TARGET



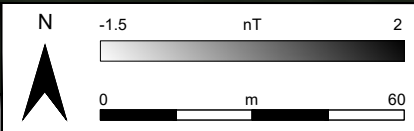


Project Kingston Solar Farm, Nottinghamshire

Client Neo Environmental Ltd. on behalf of RES (Renewable Energy Systems Ltd.)

Figure Greyscale 8

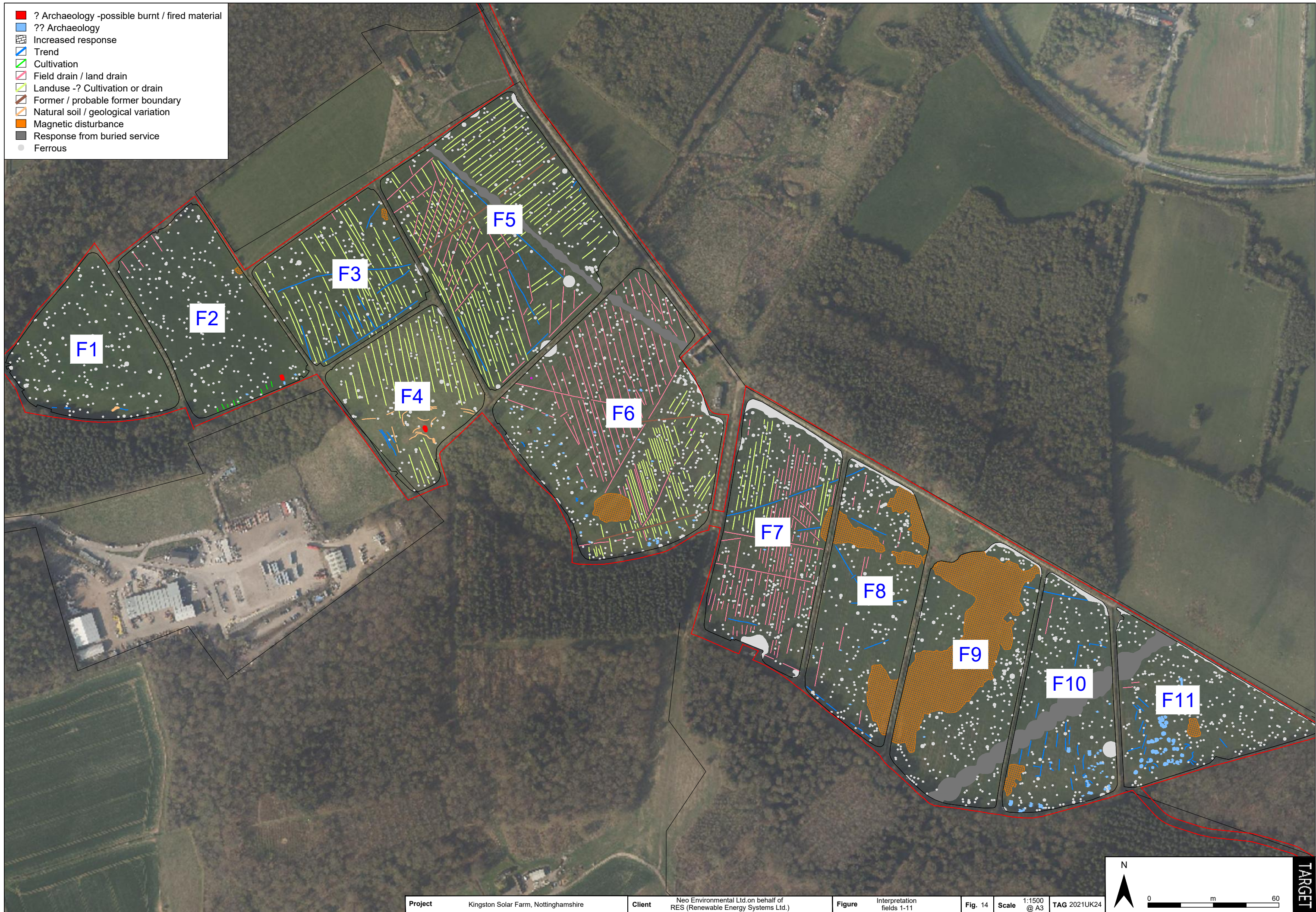
Fig. 12 Scale 1:1500 @ A3 TAG 2021UK24



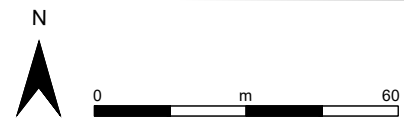
TARGET



- ? Archaeology -possible burnt / fired material
- ?? Archaeology
- Increased response
- ▬ Trend
- ▬ Cultivation
- ▬ Field drain / land drain
- ▬ Landuse -? Cultivation or drain
- Former / probable former boundary
- ▬ Natural soil / geological variation
- Magnetic disturbance
- Response from buried service
- Ferrous



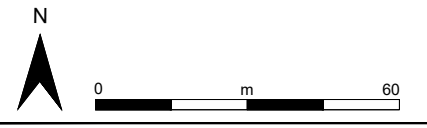
- ? Archaeology -possible burnt / fired material
- ?? Archaeology
- Increased response
- Trend
- Cultivation
- Field drain / land drain
- Landuse -? Cultivation or drain
- Former / probable former boundary
- Natural soil / geological variation
- Magnetic disturbance
- Response from buried service
- Ferrous



- ? Archaeology -possible burnt / fired material
- ?? Archaeology
- Increased response
- Trend
- Cultivation
- Field drain / land drain
- Landuse -? Cultivation or drain
- Former / probable former boundary
- Natural soil / geological variation
- Magnetic disturbance
- Response from buried service
- Ferrous



- ? Archaeology -possible burnt / fired material
- ?? Archaeology
- Increased response
- ▬ Trend
- ▬ Cultivation
- ▬ Field drain / land drain
- ▬ Landuse -? Cultivation or drain
- ▬ Former / probable former boundary
- ▬ Natural soil / geological variation
- Magnetic disturbance
- Response from buried service
- Ferrous



- ? Archaeology -possible burnt / fired material
- ?? Archaeology
- Increased response
- Trend
- Cultivation
- Field drain / land drain
- Landuse -? Cultivation or drain
- Former / probable former boundary
- Natural soil / geological variation
- Magnetic disturbance
- Response from buried service
- Ferrous

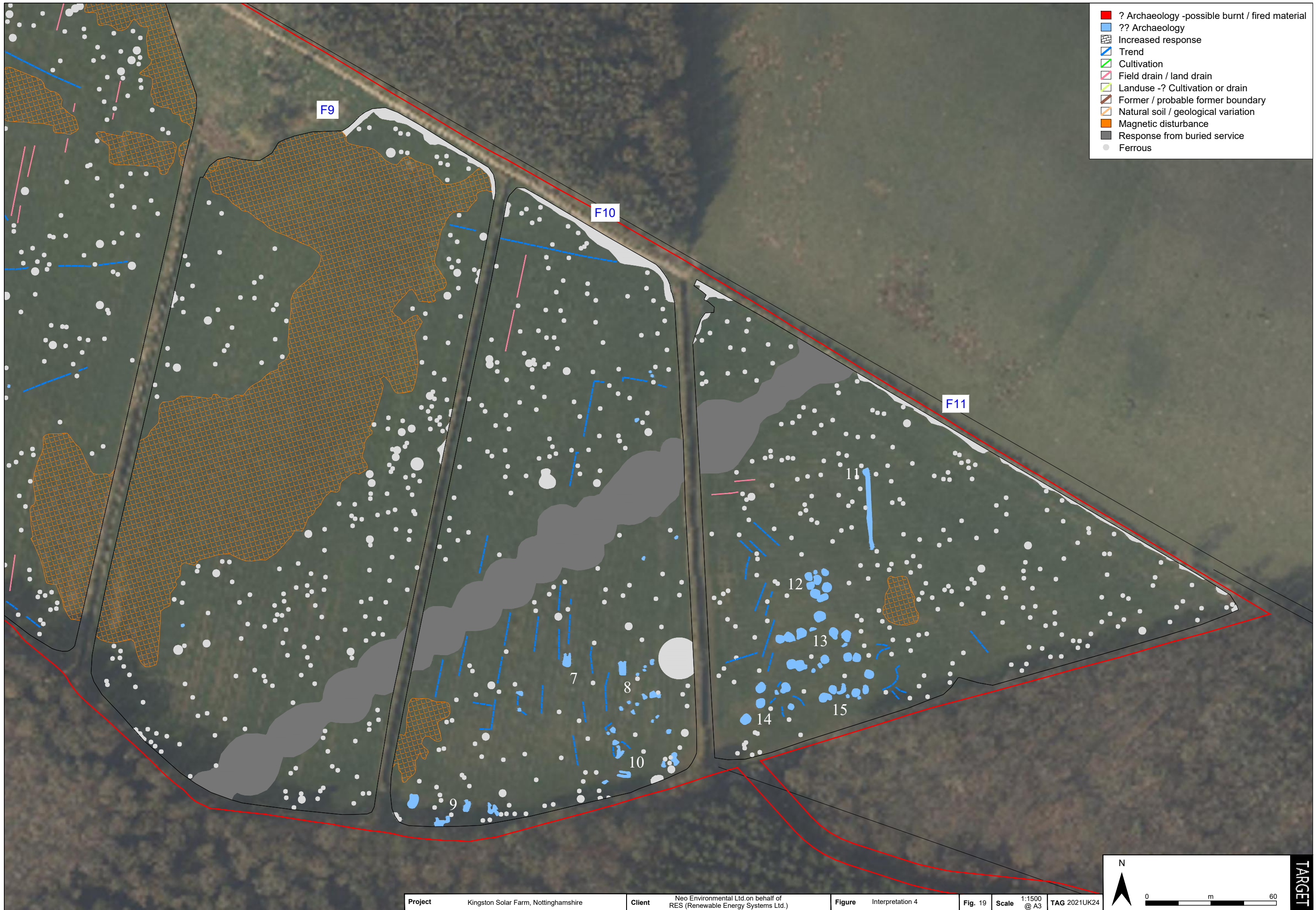


F7

F8

F9

9



- ? Archaeology -possible burnt / fired material
- ?? Archaeology
- Increased response
- Trend
- Cultivation
- Field drain / land drain
- Landuse -? Cultivation or drain
- Former / probable former boundary
- Natural soil / geological variation
- Magnetic disturbance
- Response from buried service
- Ferrous

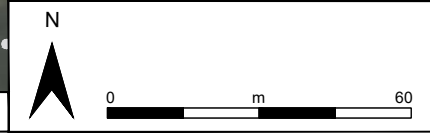
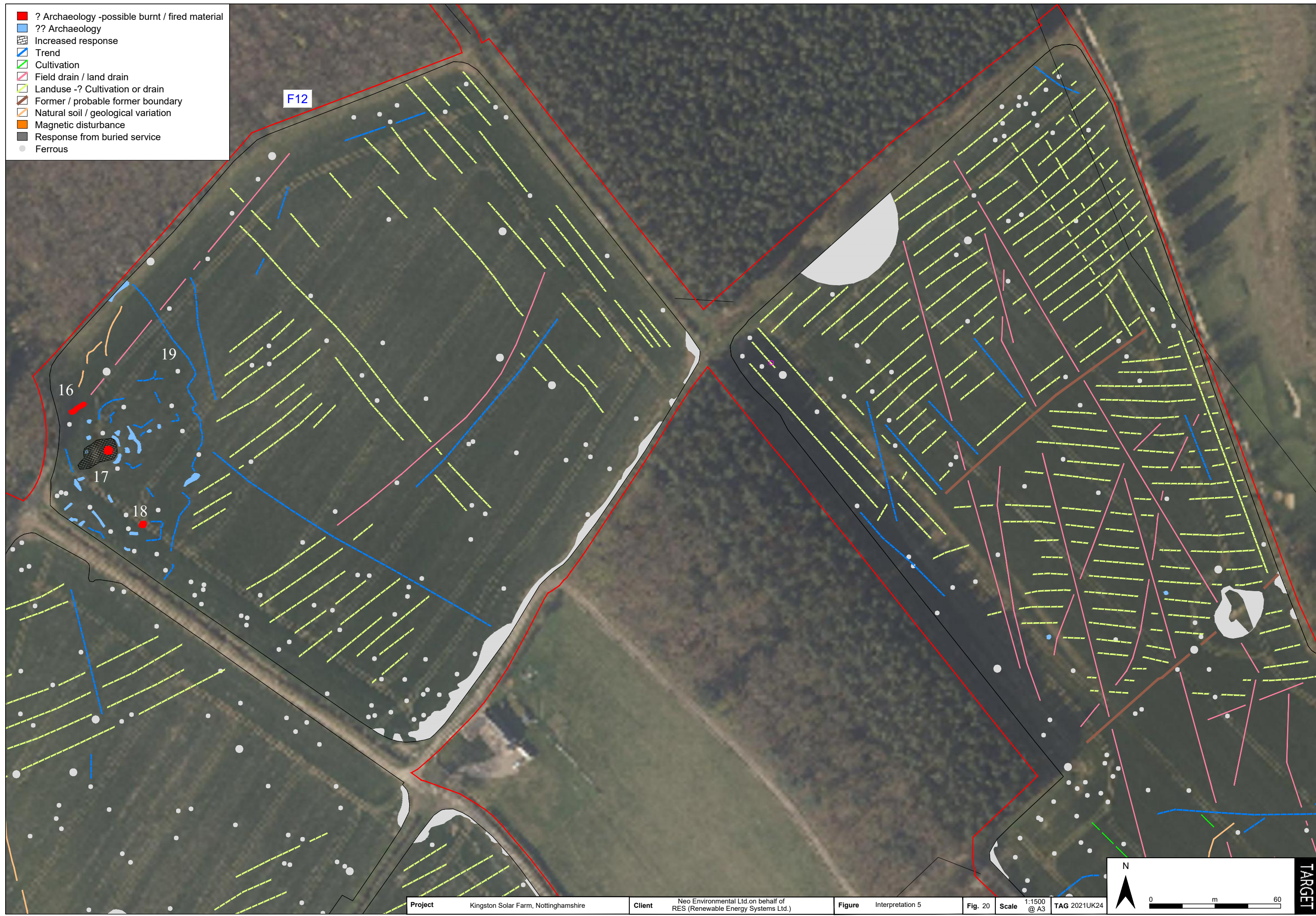
F12

16

19

17

18



TARGET



- ? Archaeology -possible burnt / fired material
- ?? Archaeology
- Increased response
- Trend
- Cultivation
- Field drain / land drain
- Landuse -? Cultivation or drain
- Former / probable former boundary
- Natural soil / geological variation
- Magnetic disturbance
- Response from buried service
- Ferrous

F13

F14

17

18

N

0 m 60

TARGET

Project Kingston Solar Farm, Nottinghamshire

Client Neo Environmental Ltd.on behalf of RES (Renewable Energy Systems Ltd.)

Figure Interpretation 6

Fig. 21

Scale 1:1500 @ A3

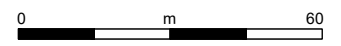
TAG 2021UK24



- ? Archaeology -possible burnt / fired material
- ?? Archaeology
- Increased response
- Trend
- Cultivation
- Field drain / land drain
- Landuse -? Cultivation or drain
- Former / probable former boundary
- Natural soil / geological variation
- Magnetic disturbance
- Response from buried service
- Ferrous

F13

F14



TARGET

- ? Archaeology -possible burnt / fired material
- ?? Archaeology
- Increased response
- Trend
- Cultivation
- Field drain / land drain
- Landuse -? Cultivation or drain
- Former / probable former boundary
- Natural soil / geological variation
- Magnetic disturbance
- Response from buried service
- Ferrous

