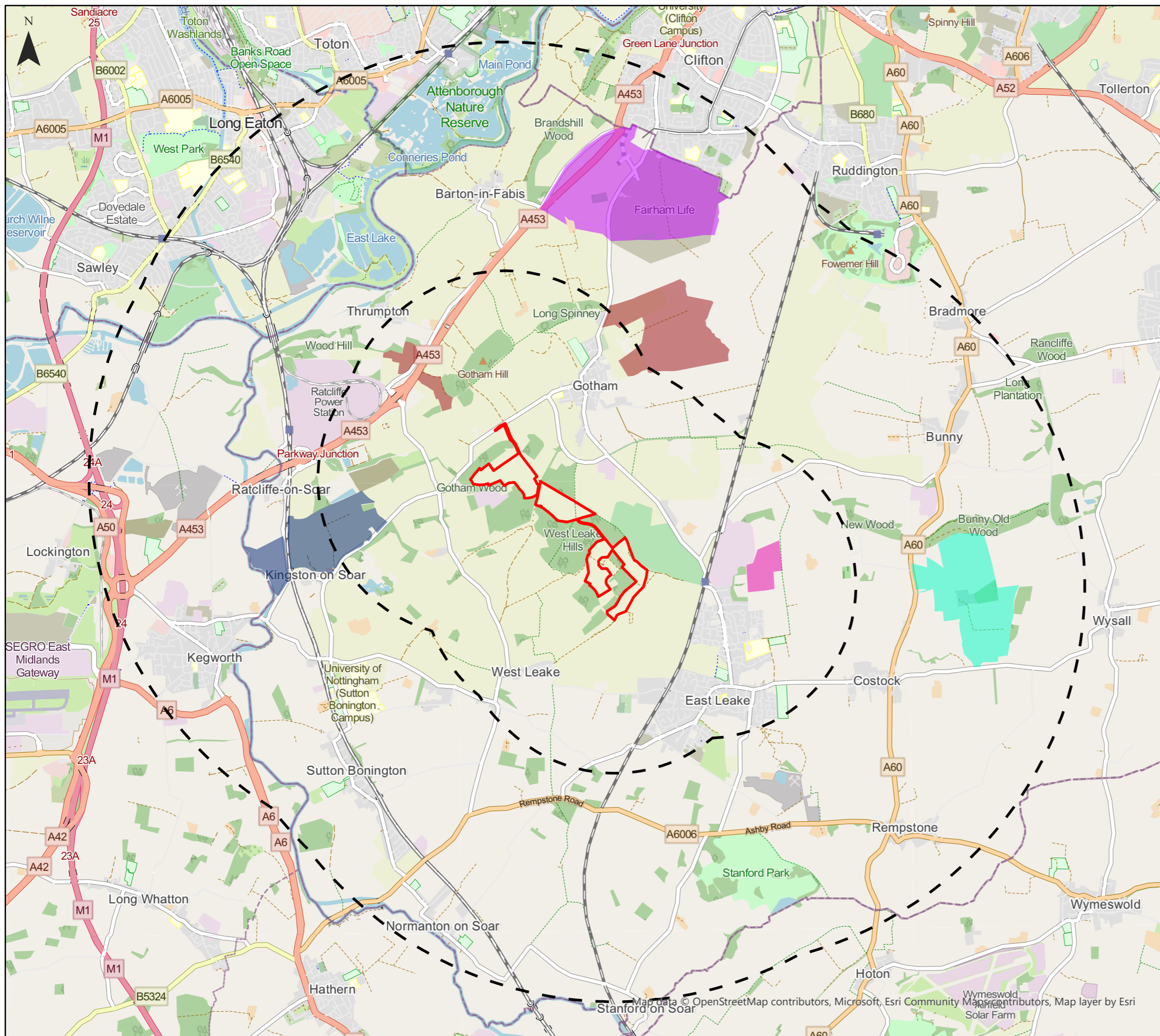


Kingston Solar Farm Cumulative Map Figure 15



Key

- Development Boundary
- 2km, 5km Study Area
- Glebe Farm Nottingham
- Land at Church Farm
- Highfield Farm Solar Farm
- Lands East & West of Nottingham
- Sharpley Solar Farm

Notes:

Glebe Farm Nottingham - Solar Farm - Screening Request In Planning (21/02163/SCREIA)

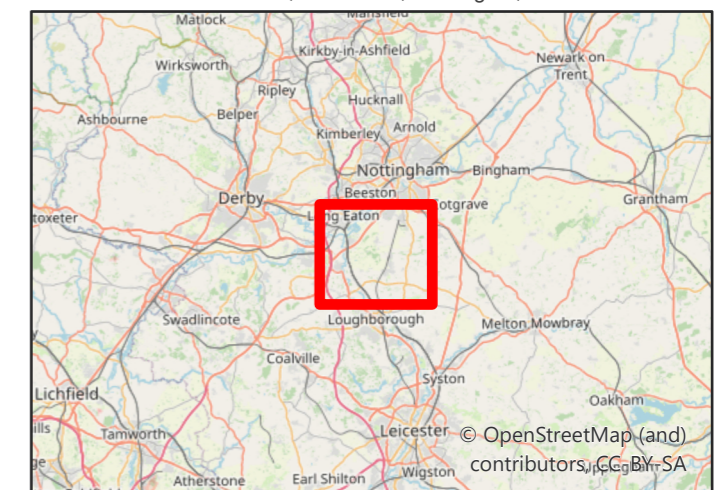
Highfields Farm - Solar Farm - Screening Request in Planning (21/02318/SCREIA)

Land East & West of Nottingham - Residential - (14/01417/OUT) - Permitted

Land at Church Farm - Solar Farm - Screening Request in Planning (21/02038/SCREIA)

Sharpley Solar Farm - Solar Farm - Consent Granted (21/00703/FUL)

Neo Office Address:
Cinnamon House, Crab Lane, Warrington, WA2 0XP



0 1.25 2.5 5 Kilometers

Date: 21/12/2021
 Drawn By: Jamie McGhee
 Scale (A3): 1:50,000
 Drawing No: NEO00763/0501/A



Map data © OpenStreetMap contributors, Microsoft, Esri Community Map contributors, Map layer by Esri